

Models:

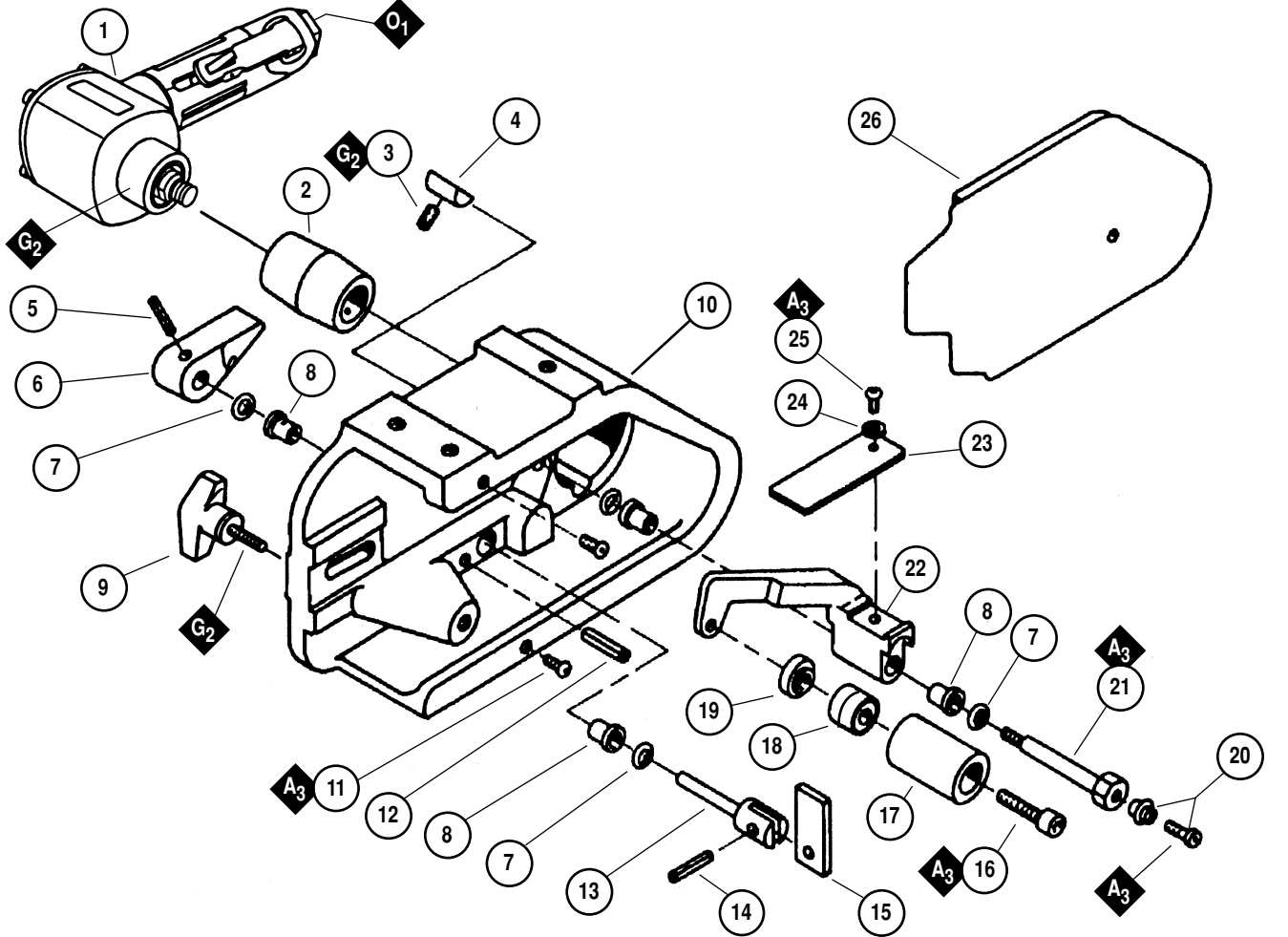
- 11462 - Standard Duty/Finisher**
- 11475 - Standard Duty**
- 11476 - Heavy Duty**

Dynabelter®

1" Wide Abrasive Belt Capacity

WARNING

Always operate, inspect and maintain this tool in accordance with the Safety Code for portable air tools (ANSI B186.1) and any other applicable safety codes and regulations. Please refer to Dynabrade's Warning/Safety Operating Instructions for more complete safety information.



95048 Wrench
 Fits 95392 Screw for
 adjusting motor position.

Index Key

No. Part # Description

1	Air Motor 01608 Model-11462, 11475 07100 Model-11476	8	11519 Flange Bearing (4)	17	11531 Idler Wheel
2	Drive Wheel 14230 Model-11462, 11475 11518 Model-11476	9	95419 Knob (Incl. 95417 Washer)	18	11016 Bearing (2)
3	95392 Set Screw	10	11516 Housing	19	11017 Spacer
4	11801 Motor Lock	11	95207 Screw (2)	20	11577 Button Latch Assy.
5	95240 Roll Pin	12	95454 Pin	21	11575 Tension Lever Screw
6	11551 Belt Tension Lever	13	11547 Shaft	22	11517 Idler Arm
7	95226 O-Ring (4)	14	95216 Pin	23	11539 Tension Spring
		15	11545 Tension Wiper	24	95146 Washer
		16	95239 Screw	25	95235 Screw
				26	11592 Cover Guard

KEY	
O	Oil: O ₁ = Air Lube
G	Grease: G ₂ = Loctite #771
A	Adhesive: A ₁ = Loctite #609 A ₂ = Loctite #271 A ₃ = Loctite #243 A ₆ = Loctite #380 A ₈ = Loctite #567
T	Torque: N·m x 8.85 = In. - lbs.

Note: To order replacement parts specify the model and serial number of your machine.

*See page 2 for 01608 and 07100 Motor Assemblies, page 3 for Standard Contact Arm Assemblies.
 See page 7 for Important Operating/Maintenance and Safety Instructions before operating this tool.