

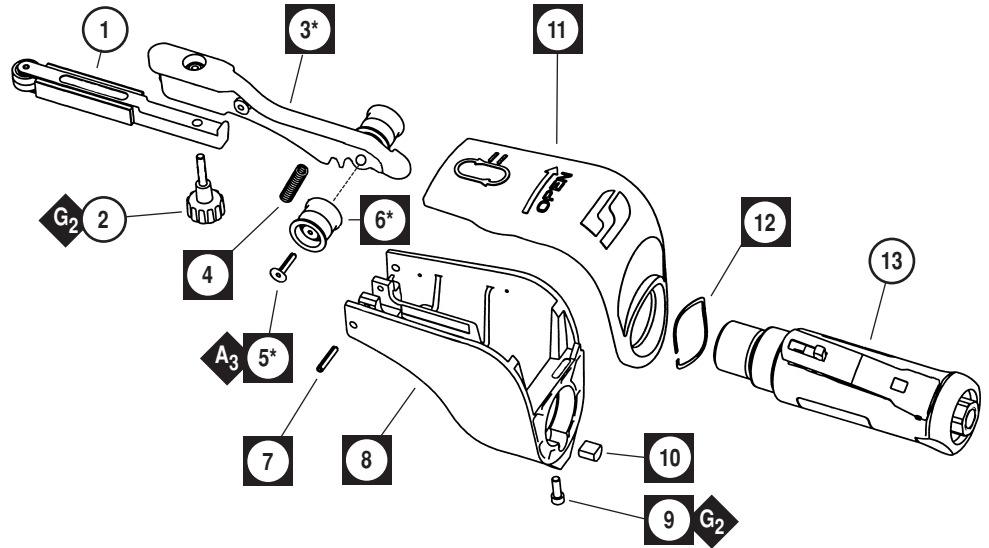
## Index Key

No. Part # Description

1	<b>Contact Arm Assembly</b>	(See pages 8-11)
2	95218	Knob Assembly
3*	11420	Idler Arm Assy., Includes: 95070 Threaded Insert 11040 Spring
4	11359	Tension Spring
5*	95162	Screw (2)
6*	11011	Idler Wheel Assy. (2) Includes: 95162 Screw 11013 Bearing 11006 Idler Wheel
7	95216	Pivot Pin
8	11418	Housing
9	95311	Screw
10	40029	Motor Lock
11	11419	Cover
12	11424	Wave Spring
13	01197	Air Motor
14	01111	Drive Wheel
15	10295	Screen
16	04087	Lock Ring
17	04078	Felt Silencer
18	04084	Air Control Ring
19	04081	Rotor Nut
20	01007	Bearing
21	01121	Shim Pack (3/pkg.)
22	01008	Bearing Plate
23	50767	Pin (2)
24	01010	Rotor Spacer
25	01013	Cylinder
26	01011	Blade (4) (4/pkg.)
27	01120	Rotor
28	01244	Bearing Plate
29	01015	Bearing
30	95558	Retaining Ring
31	30420	Housing
32	01477	Valve Stem
33	95730	O-Ring
34	01024	O-Ring
35	01247	Speed Regulator Assembly
36	01953	Safety-Lock Throttle Lever
37	01017	Pin
38	01464	Seal
39	01472	Tip Valve
40	01438	Spring
41	53190	Block Plate
42	96065	O-Ring
43	01494	Inlet Adapter

# Dynafile®

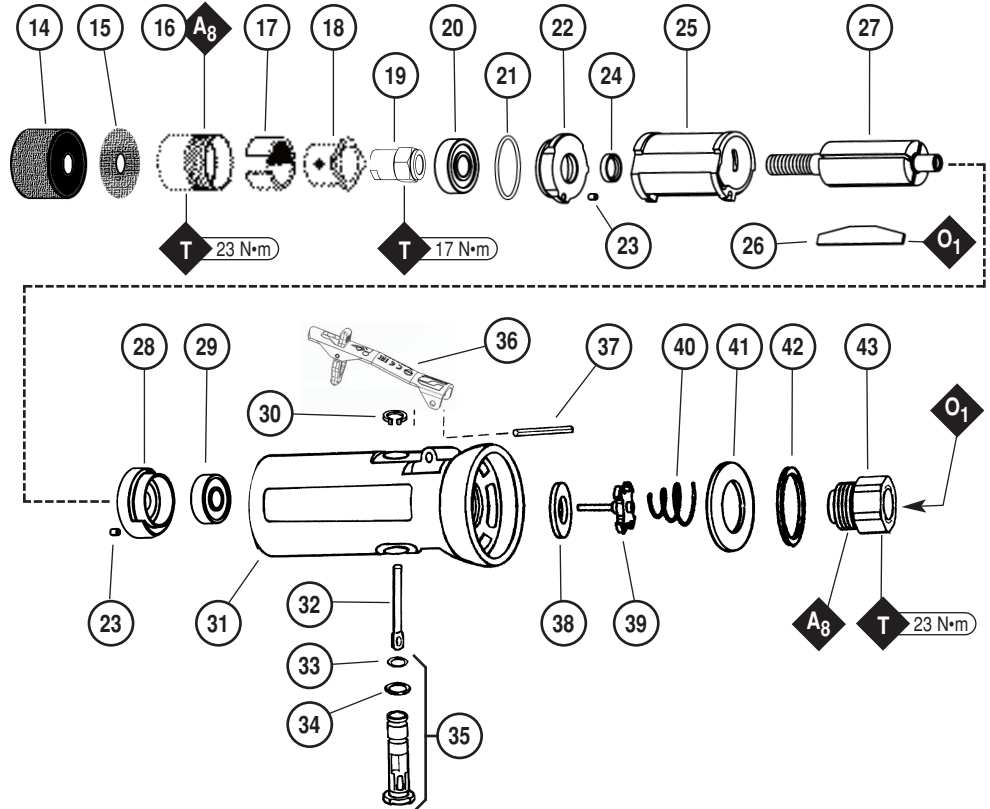
## Complete Assembly Breakdown



\*Asterisk indicates parts that are included in 11421 Idler Arm Assembly.

Note: All Boxed index numbers represent 11431 Housing Assembly.

### 01197 Air Motor with 01111 Drive Wheel



KEY	
<b>O</b>	Oil: O <sub>1</sub> = Air Lube
<b>A</b>	Adhesive: A <sub>3</sub> = Loctite #242 A <sub>8</sub> = Loctite #567
<b>T</b>	Torque: N·m x 8.85 = In. - lbs.
<b>G</b>	Grease: G <sub>2</sub> = Loctite #771

Note: 50971 Lock Ring Wrench is available for removal/installation of 04087 Lock Ring. See inside for Important Operating, Maintenance and Safety Instructions before operating tool.